

Recon Scout™ HT Positive Mud Pulse MWD System



Drilling in high-temperature formations, such as the Haynesville or the Eagle Ford, can be challenging due to catastrophic damage to downhole tool components such as electronics, batteries, etc. With this in mind, Scout Drilling Technologies built the **Recon Scout HT MWD System**, to overcome these challenges.

The Recon Scout HT MWD system was built with components that make it tough and reliable, with the capacity to handle drilling temperatures up to 365°F (185° C). The Recon Scout HT also offers some of the fastest surveys available, with data transfer rates of up to 2 bits per second and it includes real-time shock, vibration, stick-slip, and natural gamma ray.

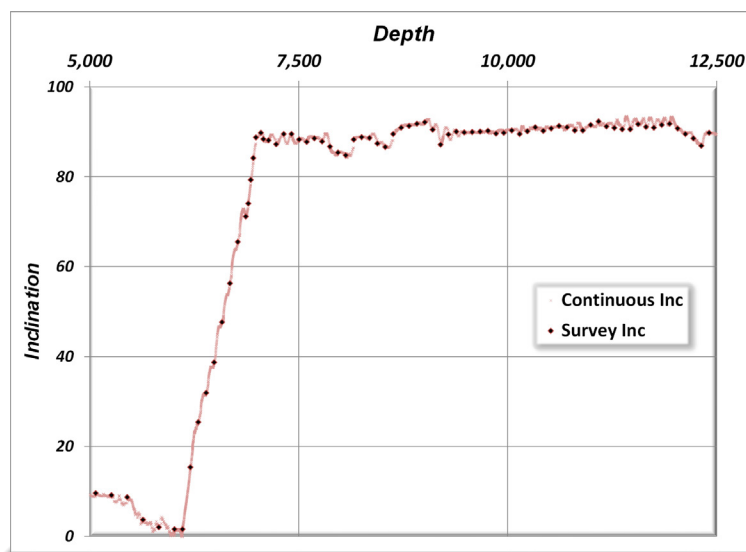
The tool can be down-linked while downhole using flow or RPM commands, providing flexibility for unforeseen events while drilling. It is also capable of dynamic sequencing whereby different data can be provided while sliding and rotating.



The continuous inclination and azimuth measurements are second to none, thus providing early warning for directional corrections.

Features:

- Rated to 365° F
- 200° C (392F) MCM Circuitry Design for Analogue to Digital Converter (ADC)
- Qualified 365°F (185°C) Gamma Modules
- 392°F (200 C°) Pulser Driver (Agilis-HT)
- Bottom mount pulser
- Flow rates of 125 gpm - 800 gpm
- 30 lbs/bbl LCM capability (with proper mixing)
- 392°F (200°C) Lithium Batteries
- 392°F tool interconnects
- Memory for diagnostics to help determine root cause of downhole incidents
- Continuous inclination and azimuth
- Real-time vibration, shock and stick-slip
- Flow or RPM downlink
- Rotation/sliding modes



RECONSCOUT™ HT



Recon Scout™ HT Positive Mud Pulse MWD System



TECHNICAL SPECIFICATIONS

Recon Scout MWD		
Special Features:	<ul style="list-style-type: none"> • Continuous Inclination and Azimuth • Flow or RPM Downlink capability • Drilling Mechanics (shock/vibration/stick-slip) 	
Sensor Specification		
Inclination	Accuracy	+0.1°
	Spread @ 90° Inc	0.2°
Azimuth	Accuracy	+0.5°
	Spread @ 90° Inc	0.5°
	Spread @ 10° Inc	1.0°
	Spread @ 5° Inc	2.0°
Dip Angle	Spread	0.4°
Total Gravity Field	Spread	2.5 mG
Total Magnetic Field	Spread	250 nT
Temperature	Operating: 140°F to 365°F (40°C to 185°C)	
Vibration	Random: 20 GRMS, 10 Hz-500 Hz	
Shock (1 mSec, half sine)	Operating: 500G's	
Pressure	20k psi	
LCM Limitations (high LCM option available)	Medium Nut Plug, 30 lbs/bbl (85.6 kg/m³)	
Telemetry	Positive Pulse	
Mechanical Specifications - deg/100ft (deg/30m)		
	Rotating	Sliding
4-3/4" (121 mm)	17	31
6-1/2" (165 mm)	10	20
6-3/4" (172 mm)	10	18



RECONSCOUT™ HT

